



# HOTEL PEZ ESPADA

MEETINGS, CONFERENCES  
AND EVENTS

# HOTEL PEZ ESPADA

---

The **Hotel Pez Espada by Medplaya** has become a hotel of reference among the 4-star superior establishments. Its location, just 10 minutes from Malaga-Costa del Sol Airport and 7 from the Torremolinos Congress Centre and right on the beachfront, is one of the greatest attractions for the business client, a place where the ideal of days spent working alternating with moments of relaxation by the sea becomes a reality.

The hotel has a total of 239 spacious and modern rooms divided into 200 superior rooms and 39 junior suites, which make each stay a unique experience.

**For meetings, there are also 3 modular rooms on two floors. These are versatile rooms, all of which have natural light.** The complex has areas of 20 to 500 m<sup>2</sup> off the main hall that connects the lounges and restaurants. The main convention hall can accommodate up to 300 people. We have a professional team for organizing events, a wide variety of catering options and advanced technology.







# TORREMOLINOS

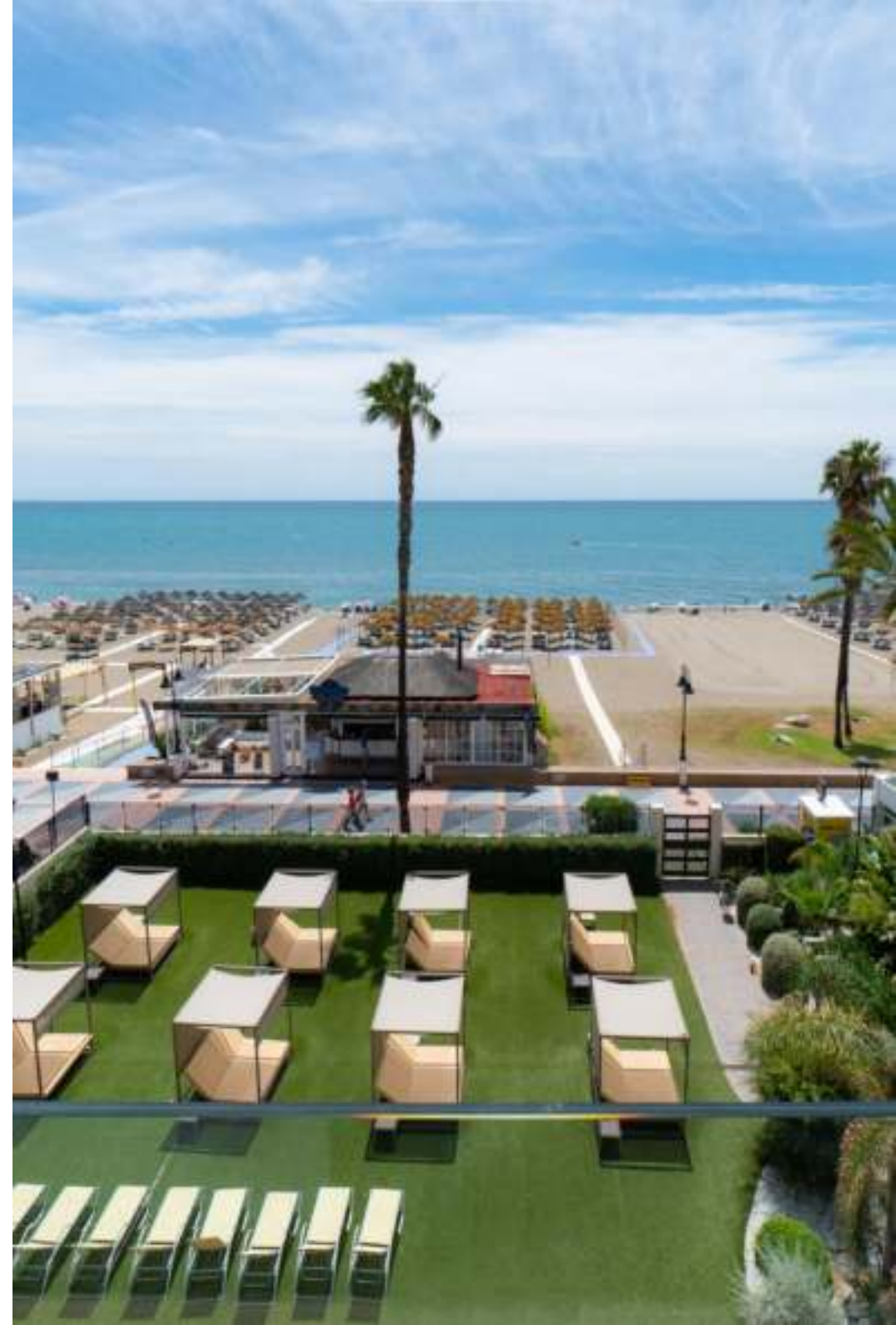
---

**Torremolinos** is a city overlooking the Mediterranean Sea, located in the heart of the province of Malaga and with a coastline of beaches and open environments, ideal for leisure and business trips.

Known as the gateway to the **Costa del Sol**, Torremolinos is a modern-style city that still preserves the seductive charms of Andalusian traditions. Here visitors enjoy more than 300 days of sunshine a year, pleasant temperatures (an average of 19°C/66°F) and 7 km of beaches along the resplendent Mediterranean coast.

The beaches of Torremolinos are endless. Wide, with wonderful, warm sand that you'll long to sink your feet into; with a calm sea, always at the perfect temperature; with an oasis of palm trees in each section; and the Q for quality distinction that guarantees their excellence.

The possibilities that Torremolinos offers are innumerable: from taking a dip and enjoying the sun at almost any time of the year; to playing all kinds of sport, including golf; through to the many restaurants where you can taste its excellent cuisine.





HOTEL PEZ ESPADA

**IMAGINE YOUR EVENT**

# CONTENTS

---

## The spaces at the Hotel Pez Espada

- Indoor spaces
  - The Ondina Room
  - The Ondina Restaurant
  - The Ondina Observation Deck
  - The Tropical Room
  - The Montemar Room
  - The Blue Marlin Restaurant
  - Frankie's
  - Panorama Room
  - 50's Bar
- Outdoor spaces
  - The Ondina Terrace
  - Frankie's Terrace
  - Cascada





THE SPACES OF THE  
HOTEL PEZ ESPADA

---





# INDOOR SPACES

---

## THE ONDINA ROOM

## THE ONDINA OBSERVATION DECK



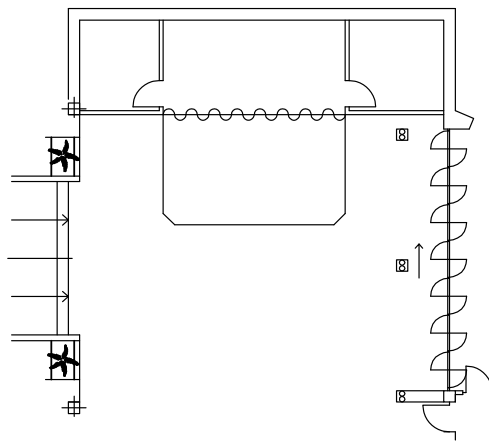
## THE ONDINA RESTAURANT

## INDOOR AREAS

# THE ONDINA ROOM

The Ondina has a floor area of 106.4 m<sup>2</sup> with the capacity of 30 attendees in theatre format and 40 diners.

106.4m<sup>2</sup>



SALONES MEETING ROOMS										
Ondina	Si	Hall	40	30	21	-	-	30	40	



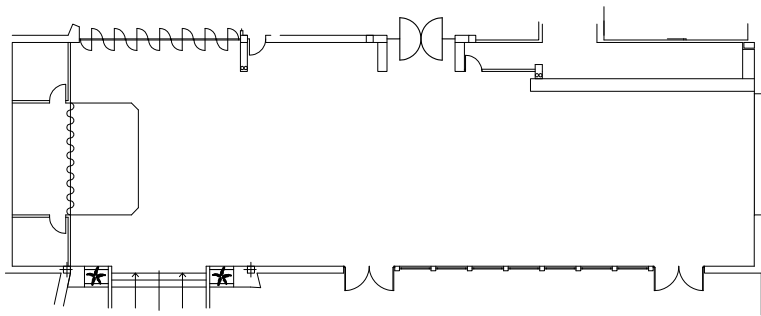
## INDOOR SPACES

# THE ONDINA RESTAURANT

The Ondina restaurant has a floor area of 210.9m<sup>2</sup> with the capacity for 200 diners in cocktail format.

It has large windows with natural light.

210.9m<sup>2</sup>



SALONES  
MEETING ROOMS



Restaurante  
Ondina

Si

Hall

-

-

-

-

-

100

200

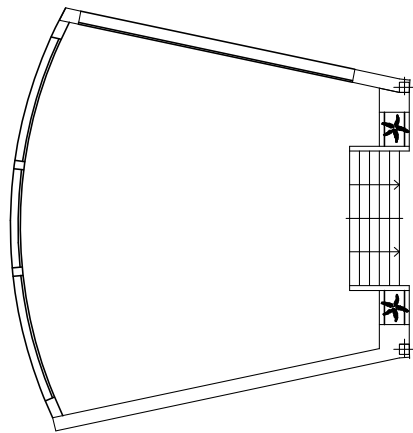
## INDOOR SPACES

# THE ONDINA OBSERVATION DECK

The Ondina observation deck has a floor area of 103.5m<sup>2</sup> with the capacity for 100 attendees in theatre format and 80 diners.

It has a hall and large windows with natural light.

103.5m<sup>2</sup>



SALONES  
MEETING ROOMS



Panorámico  
Ondina

SI

Hall

100

60

56

36

40

80

80

## THE TROPICAL ROOM



## THE BLUE MARLIN RESTAURANT



## THE MONTEMAR ROOM



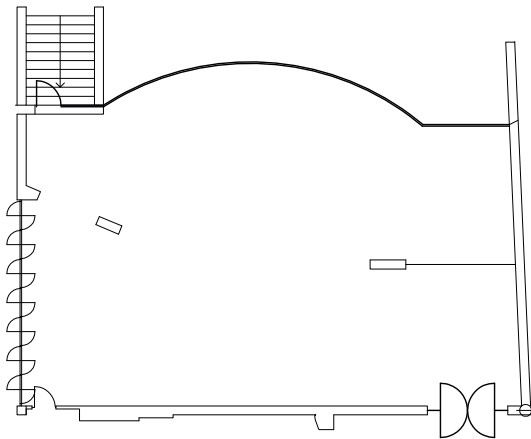
## INDOOR SPACES

# THE TROPICAL ROOM

The Tropical room has a floor area of 171.15m<sup>2</sup> with capacity for 120 attendees in theatre format and 100 diners.

It has a hall and large windows with natural light.

171.15m<sup>2</sup>



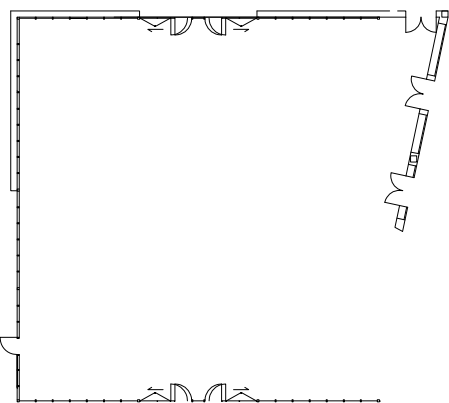
## INDOOR SPACES

# THE MONTEMAR ROOM

The Montemar room has a floor area of 334.49m<sup>2</sup> with capacity for 300 attendees in theatre format and 250 diners.

With large windows and natural light.

334.49m<sup>2</sup>



SALONES  
MEETING ROOMS



Montemar

SI

0

300

250

180

60

60

250

300



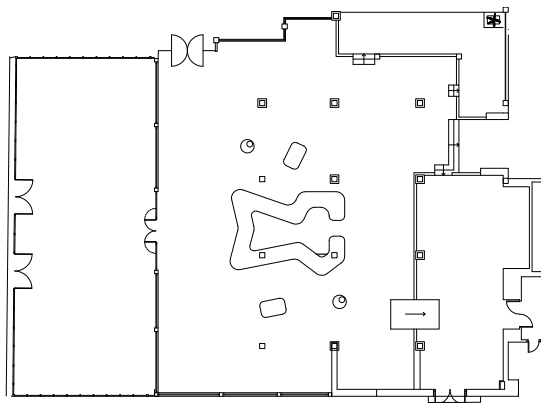
## INDOOR SPACE

# THE BLUE MARLIN RESTAURANT

The Blue Marlin restaurant has a floor area of 623.7m<sup>2</sup> with capacity for 300 diners in banquet format.

It has large windows with natural light.

623.7m<sup>2</sup>



SALONES  
MEETING ROOMS



Restaurante Blue  
Marlin

Si

0

.

.

.

.

.

.

.

300

.

.

FRANKIE'S

50'S BAR



PANORAMA  
ROOM



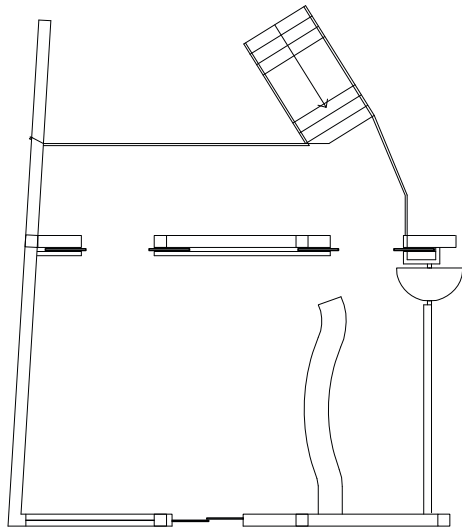
## INDOOR SPACES

# FRANKIE'S

Frankie's has a floor area of 39.65m<sup>2</sup> with capacity for 40 diners in cocktail format.

With large windows and natural light.

39.65m<sup>2</sup>



SALONES  
MEETING ROOMS



Frankie's

SI

Hall

-

-

-

-

-

-

-

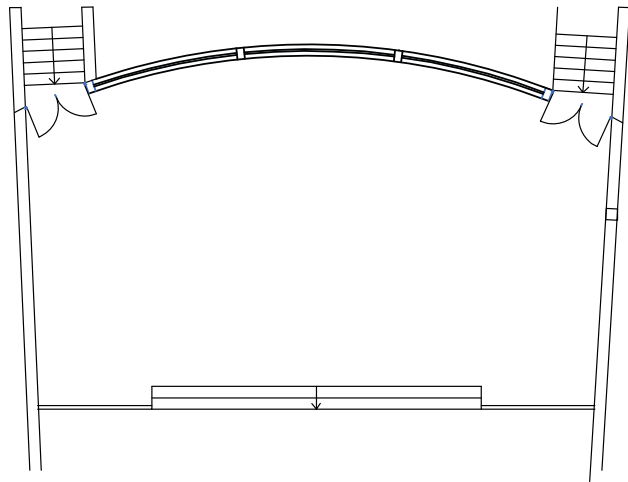
40

## INDOOR SPACES

# PANORAMA ROOM

The Panorama room has a floor area of 157.5m<sup>2</sup> with capacity for 100 diners in cocktail format.

157.5m<sup>2</sup>



SALONES  
MEETING ROOMS



Panorama

Si

Hall

.

.

.

.

.

.

100

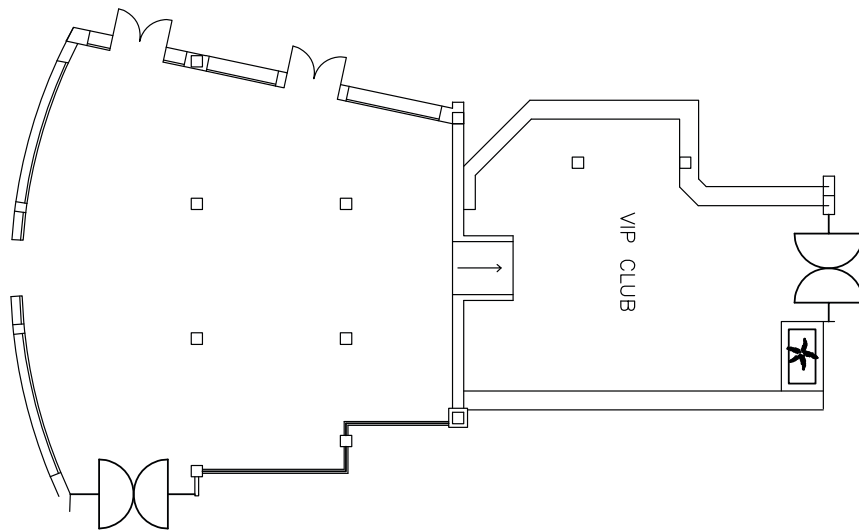


# INDOOR SPACES

## 50'S BAR

The 50's Bar has a floor area of 192.95m<sup>2</sup> with capacity for 50 seated diners and 100 diners in cocktail format.

192.95m<sup>2</sup>



SALONES  
MEETING ROOMS

50's Bar    SI    0    .    .    .    .    .    50    100



# OUTDOOR SPACES

---

## THE ONDINA TERRACE



## THE CASCADE



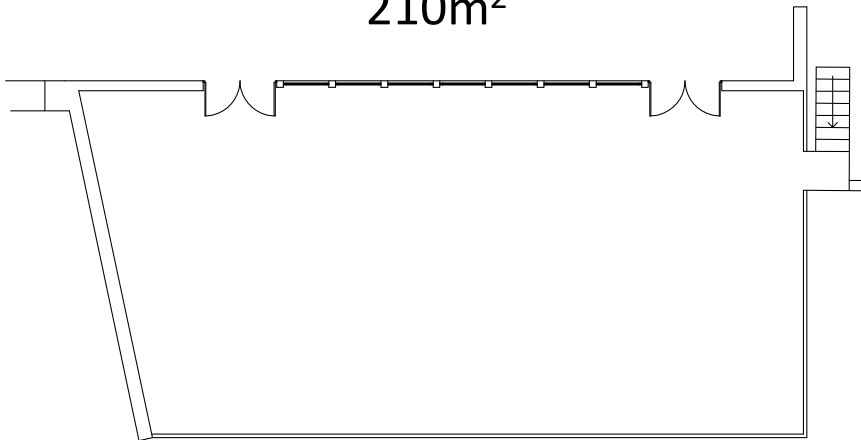
## FRANKIE'S TERRACE'S

# OUTDOOR SPACES

## THE ONDINA TERRACE

The Ondina terrace has a floor area of 210m<sup>2</sup> with capacity for 120 people in theatre format and 200 diners in banquet format.

210m<sup>2</sup>



SALONES  
MEETING ROOMS



Terraza Ondina

Si

Hall

120

.

.

.

.

.

200

210





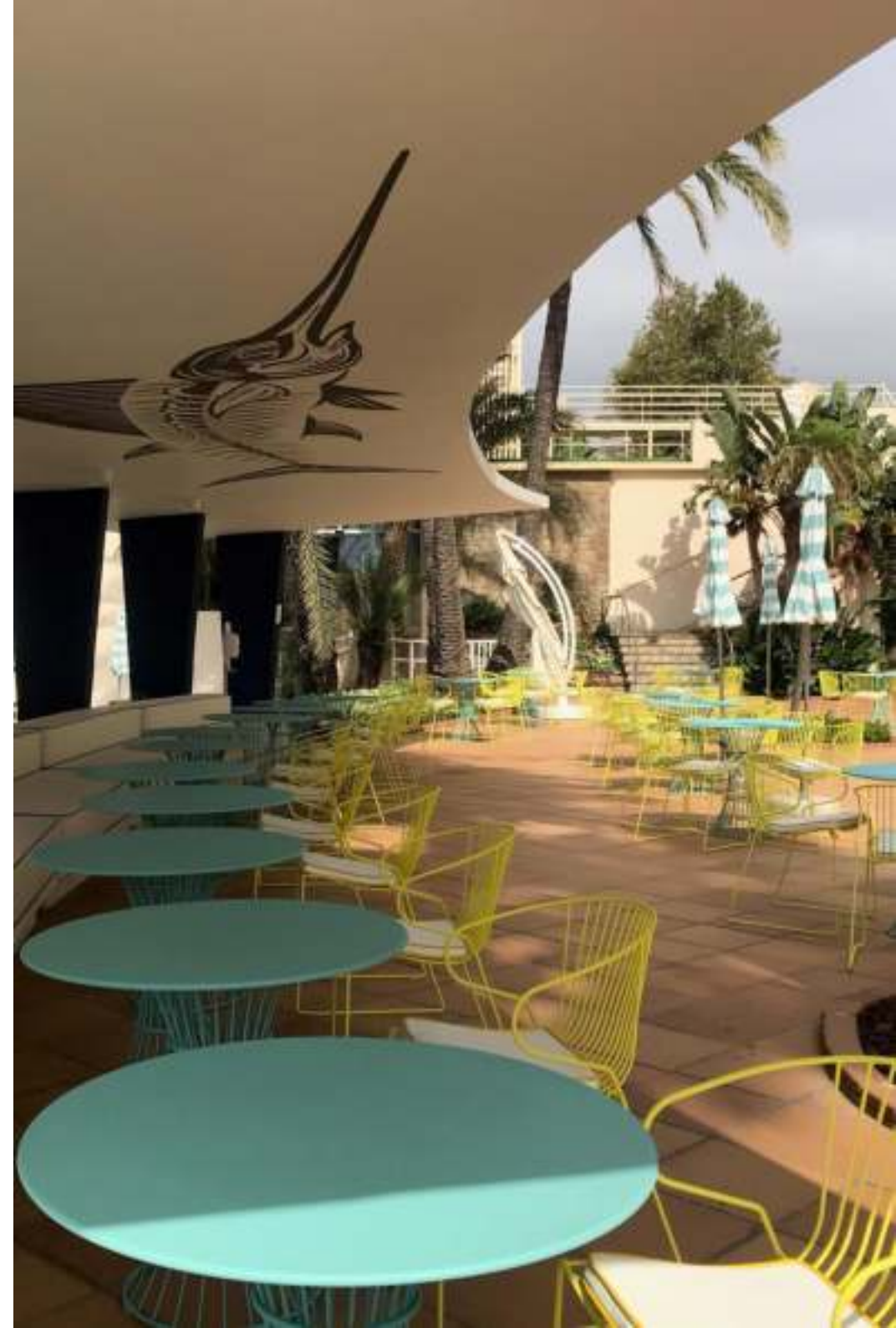
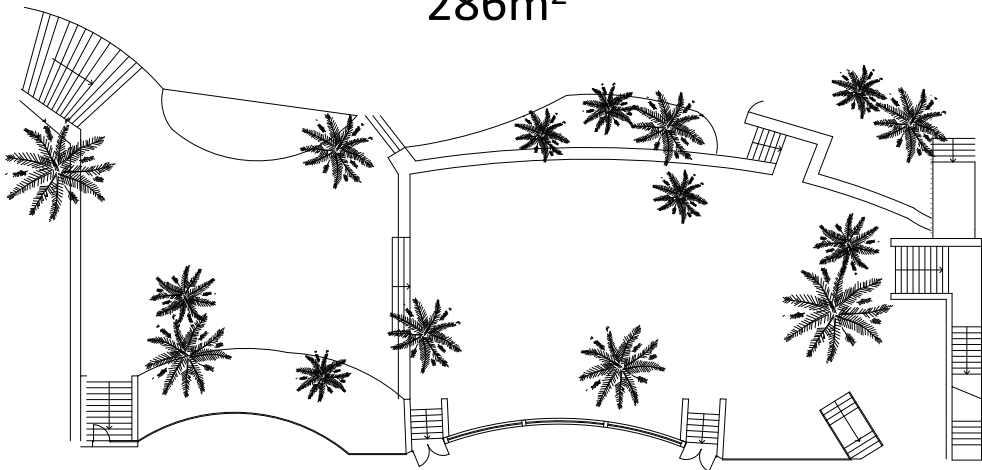
# OUTDOOR SPACES

## FRANKIE'S

### TERRACE

Frankie's terrace has a floor area of 286m<sup>2</sup> with capacity for 300 diners in cocktail format.

286m<sup>2</sup>



SALONES  
MEETING ROOMS

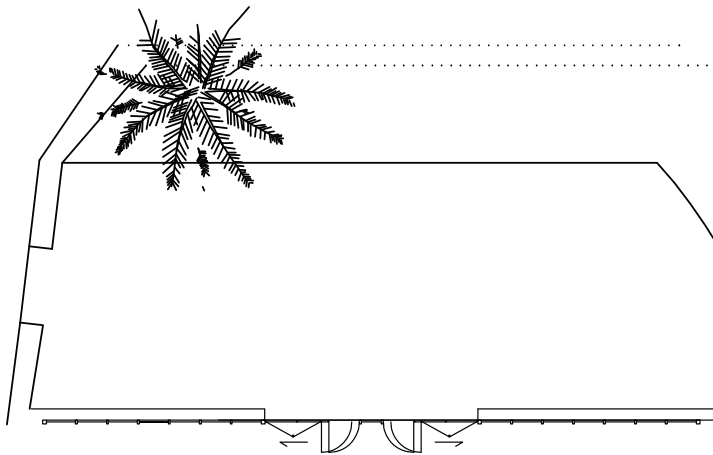
Terraza Frankie's Si Hall . . . . . 300

# OUTDOOR SPACE

## THE CASCADA

The Cascada has a floor area of 104m<sup>2</sup> with capacity for 86 diners in theatre format and 100 diners in cocktail format.

104m<sup>2</sup>



SALONES  
MEETING ROOMS

Cascada Si 0 86 . . . . . 100 104



SALONES  
MEETING ROOMS



Tropical	Yes	Hall	120	80	70	36	36	100	150	171.15	16.3	10,5	2.65
Ondina	Yes	Hall	40	30	21	-	-	30	40	106.4	11.2	9.5	2.72
Ondina Observation Deck	Yes	Hall	100	60	56	36	40	80	80	103.5	11.5	9	3.25
Tropical + Ondina + Ondina Observation Deck	Yes	Hall	260	170	147	72	76	210	270	381.05	39	29	-
Ondina Terrace	Yes	Hall	120	-	-	-	-	-	200	210	20	10.5	-
Ondina Restaurant	Yes	Hall	-	-	-	-	-	100	200	210.9	22.2	9.5	2.72
Blue Marlin Restaurant	Yes	0	-	-	-	-	-	300	-	623.07	30.1	20.7	2.6
Montemar	Yes	0	300	250	180	60	60	250	300	334.49	18.48	18.1	3-4.14
Frankie's	Yes	Hall	-	-	-	-	-	-	40	39.65	6.5	6.1	3
Frankie's Terrace	Yes	Hall	-	-	-	-	-	-	300	286	26	11	-
Panorama	Yes	Hall	-	-	-	-	-	-	100	157.5	15	10.5	2.95
Cascada	Yes	0	86	-	-	-	-	-	100	104	16	6.5	-
50's Bar	Yes	0	-	-	-	-	-	50	100	192.95	22.7	8.5	2.43



Luz natural – Natural daylight



Planta – Floor



Teatro - Theatre



Escuela – Classroom



Cabaret – Cabaret



Imperial - Boardroom



U – U



Banquete – Banqueting



Cóctel -Cocktail



Área (m<sup>2</sup>) – Area (m<sup>2</sup>)



Largo (m) – Length (m)



Ancho (m) – Width (m)



Alto (m) – Height (m)

**Contact**  
Alicia Reche  
MICE Manager  
E: [mice.pezespada@medplaya.com](mailto:mice.pezespada@medplaya.com)  
T: +952 380 300  
M: +34689 050 482

